

**SOME NEW SPECIES OF DELPHACODES**  
(Homoptera, Fulgoridae, Delphacinae)

R. H. BEAMER\*  
Lawrence, Kansas

Part V

46. *Delphacodes sucinea* n. sp. 1948

**Brachypterous form:**

Resembling a *Pissonotus* in general appearance and obviously closely related to *Delphacodes truncata* Beamer, according to genital structure. Can be separated from this species by being generally honey colored, by the narrow white stripe on apices of most elytra, by the sharp tooth on ventro-caudal margin of pygofer and by a pair of large, sharp processes on ventral margin of aedeagus near base. Length: ♂ 2mm; ♀ 2.2 mm.

**Structure:** First antennal segment slightly more than twice as long as wide; front scarcely one half longer than wide, widest at apical third, narrowed to each end, more so toward base, definitely tricarinate; crown almost twice as long as basal width, apex rounded, carinae distinct at base, almost absent at apex; elytra about as wide as long, veins indistinct, apices truncate, mesal margins extending farthest caudad; genital capsule narrowed, almost withdrawn into abdomen.

**Color:** General color honey brown, surface shiny; elytra usually with a white dash on apical margins; genital parts visible externally, almost black.

**Genitalia.** In lateral view: pygofer more than twice as wide as long with a prominent tooth at middle of caudo-ventral margin; anal segment more or less rectangular with outer caudal corners rather projecting, not considered processes; aedeagus curved ventrad at base, narrowed near outer third, apex rounded, a pair of large, sharp processes near basal third on ventral margin, aedeagal brace not visible; styles almost straight with sides nearly parallel, tapered on outer third to quite sharp apices; in caudal view: aedeagal brace not extended dorsad; styles with sides almost parallel, extended out on basal half, then curving in to angularly narrowed apices.

**Holotype** ♂, allotype ♀, 52 ♂ and 15 ♀ paratypes Saucier, Miss., March 5, 1947, R. H. Beamer; Other paratypes: 4 ♂ and 1 ♀, Ocean Springs, Miss., March 3, 1947, R. H. Beamer; 1 ♀ Live Oak, Fla., Jan. 1, 1931, P. W. Oman; 1 ♂ Hilliard, Fla., Oct. 5, 1938, P. W. Oman; 1 ♂, Zolfo Springs, Fla., July 15, 1939, P. W. Oman; 1 ♀ North of Picnic, Fla., Sept. 8, 1938, P. W. Oman.

Types and paratypes in Snow Entomological Collections; paratypes in United States National Museum.

\*Contribution from the Department of Entomology, University of Kansas.

47. *Delphacodes penelutea* n. sp.**Brachypterous form:**

Resembling *Delphacodes lutea* Beamer but elytra truncate at apices and extending only to about middle of abdomen, while in *lutea* the apices of elytra are rounded and extend almost to genital capsule. Length, ♂ 2.2 mm.; ♀ 2.3 mm.

**Structure:** First segment of antennae about as long as wide; front not quite twice as long as wide, widest near apical third, narrowed toward each end, more so toward base, distinctly tricarinate; crown about one-third longer than wide, apex rounded, carinae fairly distinct; elytra about as wide as long, semihyaline, veins thickened, apices truncate, extending about to middle of abdomen.

**Color:** General color stramineous, abdomen of male usually mostly quite dark brown.

**Genitalia:** In lateral view: pygofer more or less trapezoidal, dorsal margin definitely narrower than ventral; anal segment without processes; aedeagus about four times as wide at base as at ventral bend near apex, two teeth ventrally on each side near middle, 3-4 teeth on dorsal margin at bend, apex sharp; aedeagal brace triangular widest at base; styles almost straight, enlarged at apex; in caudal view: aedeagal brace not extended dorsad; styles widest at base, sinuate on outer margin, more or less bifid at apices.

Holotype ♂, allotype ♀, 40 ♂ and 22 ♀ paratypes, Saucier, Miss., March 5, 1947, R. H. Beamer; other paratypes: 1 ♂ and 3 ♀ ♀, Woodville, Fla., March 7, 1947, R. H. Beamer; 4 ♂ ♂ and 2 ♀ ♀, Naples, Fla., March 16, 1947, R. H. Beamer; 12 ♂ ♂ and 1 ♀, Homestead, Fla., March 14, 1947, R. H. Beamer; 2 ♂ ♂ same place and date, L. D. Beamer; 1 ♂ Wakulla, Fla., July 11, 1939, P. W. Oman; 1 ♂ Sanford, Fla., Jan. 15, 1926, E. D. Ball.

Types and paratypes in Snow Entomological Collections; paratypes in United States National Museum.

48. *Delphacodes paraparvula* n. sp.**Brachypterous form:**

Resembles *Delphacodes parvula* Ball, but anal segment of male with two pairs of processes instead of none. Length ♂ 1.5 mm.; ♀ 2.8 mm.

**Structure:** First segment of antennae twice as long as wide; front not quite twice as long as wide, widest near apical third, narrowed toward each end, distinctly tricarinate; crown about one-third longer than wide, apex rounded, carinae definite at base more or less obscure on apex; elytra semihyaline, about twice as long as wide, ending just before genital capsule, apices rounded, veins raised.

**Color:** General color stramineous, occasionally more or less indications of darker longitudinal rows of spots on abdomen, styles and processes of anal segment dark brown.

**Genitalia:** In lateral view; pygofer more or less rectangular, posterior ventral corner greatly extended; anal segment with two pairs of sharp processes, the first many times longer than second; aedeagus widest at base,

*lutea* n. sp.

ut elytra truncate at apices and  
n, while in *lutea* the apices of  
ital capsule. Length, ♂ 2.2 mm.;

out as long as wide; front not  
cal third, narrowed toward each  
rinate; crown about one-third  
fairly distinct; elytra about as  
apices truncate, extending about

en of male usually mostly quite

or less trapezoidal, dorsal mar-  
al segment without processes;  
as at ventral bend near apex,  
dle, 3-4 teeth on dorsal margin  
lar widest at base; styles almost  
edeagal brace not extended dor-  
r margin, more or less bifid at

paratypes, Saucier, Miss., March  
nd 3 ♀ ♀, Woodville, Fla., March  
ples, Fla., March 16, 1947; R. H.  
March 14, 1947, R. H. Beamer;  
♂ Wakulla, Fla., July 11, 1939,  
E. D. Ball.

ogical Collections; paratypes in

*parvula* n. sp.

t anal segment of male with two  
♂ 1.5 mm.; ♀ 2.8 mm.

wide as long as wide; front not  
ical third, narrowed toward each  
e-third longer than wide, apex  
ss obscure on apex; elytra semi-  
ling just before genital capsule,

sionally more or less indications  
men, styles and processes of anal

re or less rectangular, posterior  
ent with two pairs of sharp pro-  
econd; aedeagus widest at base,

gently narrowing, curving ventrad from near middle to apex, with a pair  
of truncate teeth on right side near outer third and a pair of sharp teeth  
on left side in same position; aedeagal brace visible, oval in shape, notched  
on dorsal margin; styles with very large heels narrowed to more or less  
avicephaliform apices; in caudal view: aedeagal brace broad, extended  
dorsad about half its width; styles almost straight with avicephaliform  
apices, beaks on inner margin long and almost parallel sided.

Holotype ♂, allotype ♀, 7 ♂ and 2 ♀ paratypes. Pearlington, Miss., March  
3, 1947, R. H. Beamer.

Types and paratypes in Snow Entomological Collections.

49. *Delphacodes concava* n. sp.

**Brachypterous form:**

Resembling *Delphacodes paraparvula* Beamer but elytra longer, usually  
reaching genital capsule, anal segment of male with one pair of processes,  
and aedeagal brace in caudal view undercut at each side. Length, ♂ 2.4  
mm.; ♀ 2.7 mm.

**Structure:** First segment of antennae slightly more than twice as long  
as wide; front very slightly more than twice as long as wide, widest near  
apical third, slightly narrowed toward each end, definitely tricarinate; crown  
about one-third longer than basal width, apex rounded, carinae distinct;  
elytra semihyaline, about twice as long as wide, reaching or almost reach-  
ing genital capsule, apices rounded, veins thickened.

**Color:** General color stramineous, darker spot above middle and hind  
coxae and surrounding ocelli, abdomen generally dark brown with first  
segment golden yellow or dorsum.

**Genitalia:** In lateral view; pygofer about one-third wider than long,  
widest at base; anal segment with a pair of processes near middle; aedeagus  
widest at base, gradually narrowed and curved ventrad to tip, with four  
teeth on dorsal margin; aedeagal brace not visible; styles more or less  
pediform, narrowed on outer half; in caudal view: aedeagal brace extended  
dorsad about basal width, each margin under cut; styles narrowed in  
middle, apices avicephaliform, beak on inner margin, very broad.

Holotype ♂, allotype ♀, 24 ♂ and 7 ♀ paratypes, Woodville, Fla., March  
7, 1947, R. H. Beamer; other paratypes: 4 ♂ ♂ and 4 ♀ ♀, Tallahassee, Fla.,  
March 7, 1947, R. H. Beamer; 1 ♂ same place and date, L. D. Beamer; 1 ♂,  
Sanford, Fla., Jan. 7, 1925, E. D. Ball; 1 ♀ Sanford, Fla., Feb. 16, 1926, E. D.  
Ball; 3 ♀ ♀ Sanford, Fla., Aug. 9, 1926, E. D. Ball; 2 ♂ ♂, Sanford, Fla.,  
July 22, 1926, E. D. Ball; 1 ♂ Way Cross, Ga., March 18, 1947, R. H. Beamer.

Types and paratypes in Snow Entomological Collections; paratypes in  
United States National Museum.

50. *Delphacodes ardentis* n. sp.

**Macropterous form:**

Resembling *Delphacodes bocana* Beamer but dorsum darker, with a  
median longitudinal light stripe, aedeagal brace visible in lateral view and  
greatly extended dorsad in caudal view. Length, ♂ 3 mm.; ♀ 3.5 mm.

**Structure:** First segment of antennae about twice as long as wide; front slightly more than twice as long as wide, widest near apical third, narrowed toward each end, slightly more so toward base, distinctly tricarinate; crown a little longer than basal width, carinae distinct; elytra about one-third longer than abdomen, widest near apex.

**Color:** General color stramineous; spot on hind coxae darker; area between carinae of front dark brown to black; dorsum with median longitudinal, narrow white line; elytra semihyaline with veins much darker, especially on outer half.

**Genitalia:** In lateral view; pygofer more or less rectangular, ventral margin about twice as long as dorsal, with small tooth at posterior corner; anal segment with pair of straight, sharp-pointed processes; aedeagus almost straight, about three times as wide at base as on outer third, three or four teeth on dorsal margin of outer third, two larger ones on right side near middle; aedeagal brace visible, triangular in shape, narrowed at base; styles widest near apices, more or less pediform; in caudal view: aedeagal brace greatly extended dorsad, widest at base; styles more or less avicephaliform at apices with beak on inner margin.

Holotype ♂, allotype ♀, Palatka, Fla., March 10, 1947, R. H. Beamer; 2 ♂ paratypes, Royal Palm Park, Fla., March 16, 1947, R. H. Beamer.

**Brachypterous form:**

Like the macropterous form except hind wings wanting and front wings reaching about to tip of abdomen.

Holomorphytype ♂ and 1 ♀ paramorphytype, Palatka, Fla., March 10, 1947, R. H. Beamer.

All types in the Snow Entomological Collections.

51. *Delphacodes plenatra* n. sp

**Brachypterous form:**

Resembling *Delphacodes opaca* Beamer but smaller, aedeagus curved ventrad and genital capsule not flaring in caudal view. Length, ♂ 1.2 mm.; ♀ 1.6 mm.

**Structure:** First segment of antennae about as wide as long; front about one-third longer than wide, widest near outer third, narrowed toward each end, more so toward base, distinctly tricarinate, median carina enlarged; crown slightly longer than wide, carinae distinct; elytra about as wide as long, reaching to about second segment of abdomen, veins raised, apices rounded; genital capsule not flaring in caudal view.

**Color:** Male usually dark brown or black, female varying from stramineous to dark brown or black. Basal half of crown often much lighter.

**Genitalia:** In lateral view: pygofer about one-third longer on ventral than on dorsal margin; anal segment with one pair of more or less avicephaliform processes; aedeagus widest near middle, furcate on outer half, generally curved ventrad; aedeagal brace not visible; styles barely visible, apices narrowed; in caudal view: aedeagal brace not extended dorsad, slightly V-shaped; styles very large on basal half, narrowed to fourth basal width on outer half.

out twice as long as wide; front  
 widest near apical third, narrowed  
 base, distinctly tricarinate; crown  
 distinct; elytra about one-third

dark on hind coxae darker; area  
 black; dorsum with median longi-  
 tudinal line with veins much darker,

are more or less rectangular, ventral  
 small tooth at posterior corner;  
 pointed processes; aedeagus almost  
 as long as on outer third, three or four  
 larger ones on right side near  
 apex, narrowed at base; styles  
 in caudal view: aedeagal brace  
 almost more or less avicephaliform

March 10, 1947, R. H. Beamer;  
 March 16, 1947, R. H. Beamer.

wings wanting and front wings

holotype, Palatka, Fla., March 10,

collections.

*patra* n. sp

but smaller, aedeagus curved  
 in caudal view. Length, ♂ 1.2 mm.;

out as wide as long; front about  
 one-third, narrowed toward each  
 end, tricarinate, median carina enlarged;  
 distinct; elytra about as wide as  
 length of abdomen, veins raised, apices  
 truncate in caudal view.

in male, female varying from stramine-  
 ous, crown often much lighter.

out one-third longer on ventral  
 side, one pair of more or less avice-  
 phaliform processes, middle, furcate on outer half,  
 not visible; styles barely visible,  
 aedeagal brace not extended dorsad,  
 in caudal view, narrowed to fourth basal

Holotype ♂, allotype ♀, 88 ♂ and 127 ♀ paratypes, Chino Valley, Ariz.,  
 July 12, 1947, R. H. Beamer; other paratypes: 18 ♂ and 8 ♀ ♀, Mescalera,  
 N.M., June 27, 1947, R. H. Beamer; 16 ♂ ♂ and 10 ♀ ♀, Belen, N. M., July  
 1, 1947, R. H. Beamer; 51 ♂ ♂ and 21 ♀ ♀, Chiricahua Mts., Ariz., July 5,  
 1947, R. H. Beamer; 27 ♂ ♂ and 15 ♀ ♀, Vernal, Utah, Aug. 2, 1947, R. H.  
 Beamer.

**Macropterous form:**

Like the brachypterous form except with flight wings which extend about  
 one-third their length beyond the abdomen.

Holomorphotype ♀ and 8 ♀ paramorphotypes, Chino Valley, Ariz., Aug.  
 12, 1947, R. H. Beamer.

Types and paratypes in the Snow Entomological Collections.

52. *Delphacodes venusta* n. sp.

**Macropterous form:**

Resembling *Delphacodes gillettei* (Van D.) but much lighter in color,  
 aedeagal brace of male extended dorsad in caudal view with undercut sides.  
 Length to tip of wings, ♂ 5 mm.

**Structure:** First antennal segment about as long as wide; front twice as  
 long as wide, widest near middle, narrowed toward each end, slightly more  
 so toward base; crown distinctly longer than wide, carinae distinct; elytra  
 extend about one-third their length beyond abdomen, widest beyond cross  
 veins, veins raised.

**Color:** General color stramineous, an occasional specimen with usual  
 darker regions, the average specimen with only a darker spot above hind  
 coxae.

**Genitalia:** In lateral view: pygofer more or less rectangular; anal seg-  
 ment with one pair of heavy, sharp processes; aedeagus long, sinuate, en-  
 larged on outer third with about three rows of short teeth; aedeagal brace  
 narrow, sides parallel; styles pediform, apices narrowed; in caudal view:  
 aedeagal brace extended dorsad, deeply undercut on either side, apex  
 rounded; styles widest at base, narrowed to rather sharp apices.

Holotype ♂ and 17 ♂ paratypes, Ft. Davis, Tex., June 22, 1947, R. H.  
 Beamer.

Types in the Snow Entomological Collections.

53. *Delphacodes compta* n. sp.

**Brachypterous form:**

Resembling *Delphacodes lineatipes* (Van D.) but with cross bands of  
 white. Length, ♂ 1.7 mm.; ♀ 2 mm.

**Structure:** First segment of antennae slightly longer than wide; front  
 one-third longer than wide, widest near apical third, narrowed to each end,  
 more so toward base, strongly tricarinate; crown slightly longer than wide,  
 widest at apex, carinae distinct; elytra as wide as long, apices truncate,  
 venation not distinct.

**Color:** General color dark brown to black; carinae of front and crown  
 stramineous, this light portion ending near middle of crown; posterior half  
 of pronotum and apical third of elytra almost white; semblance of broad,

median, dorsal stripe on apical half of abdomen lighter, usually last three abdominal segments with a light spot on lateral margin; legs fulvous.

**Genitalia:** In lateral view: pygofer narrowed on dorsal margin, with definite tooth on caudo-ventral corner; anal segment without teeth in usual sense but with a short, sharp flange on caudo-dorsal corner; aedeagus widest at base, slightly narrowing and curving ventrad to tip with about four retrorse teeth on dorsal margin of outer half; aedeagal brace not visible; styles widest at base, tapering to apices; in caudal view; aedeagal brace not extended dorsad; styles widest at base, narrowing to more or less avicephaliform apices with beak on inner margin.

Holotype ♂, allotype ♀, 33 ♂ and 28 ♀ paratypes, Del Mar, Calif., July 22, 1947, R. H. Beamer.

Types in Snow Entomological Collections.

#### 54. *Delphacodes munda* n. sp.

##### Brachypterous form:

Resembling *Delphacodes campestris* (Van D.) but male with black spot on pronotum back of each eye and both sexes with region between frontal carinae brown to black. Length, ♂ 1.9 mm.; ♀ 2.3 mm.

**Structure:** First segment of antennae twice as long as wide; front slightly more than twice as long as wide, widest near middle, very slightly narrowed at apex, more so toward base, definitely tricarinate; crown as long as wide, carinae definite; elytra reaching genital capsule, apices rounded.

**Color:** General color stramineous; parts of coxae, spots above them, most of genae, area between frontal carinae, spot on pronotum back of each eye, sides of scutellum and more or less dorsum of abdomen brown or black.

**Genitalia:** In lateral view: pygofer about as long as wide; anal segment with a pair of curved, sharp-pointed processes, about as long as basal width; aedeagus widest at base, narrowed to apex, curving ventrad on outer third, four teeth on dorsal margin near base and about six teeth along ventral margin near middle; aedeagal brace not visible; styles widest at base, narrowed on outer third; in caudal view: aedeagal brace extended dorsad about its basal width; styles widest at base, almost parallel-sided on

#### PLATE VII

46. Lateral view of genital capsule of male of *Delphacodes sucinea* Beamer.
- 46a. Caudal view of styles and aedeagal brace of *Delphacodes sucinea* Beamer.
- 46b. Lateral view of aedeagus enlarged of *Delphacodes sucinea* Beamer.
47. Lateral view of genital capsule of male of *Delphacodes penelutea* Beamer.
- 47a. Caudal view of styles and aedeagal brace of *Delphacodes penelutea* Beamer.
- 47b. Lateral view of aedeagus enlarged of *Delphacodes penelutea* Beamer.
48. Lateral view of genital capsule of male of *Delphacodes paraparvula* Beamer.
- 48a. Caudal view of styles and aedeagal brace of *Delphacodes paraparvula* Beamer.
- 48b. Lateral view of aedeagus enlarged of *Delphacodes paraparvula* Beamer.
49. Lateral view of genital capsule of male of *Delphacodes concava* Beamer.
- 49a. Caudal view of styles and aedeagal brace of *Delphacodes concava* Beamer.
- 49b. Lateral view of aedeagus enlarged of *Delphacodes concava* Beamer.
50. Lateral view of genital capsule of male of *Delphacodes argentis* Beamer.
- 50a. Caudal view of styles and aedeagal brace of *Delphacodes argentis* Beamer.
- 50b. Lateral view of aedeagus enlarged of *Delphacodes argentis* Beamer.

men lighter, usually last three  
 teral margin; legs fulvous.  
 rowed on dorsal margin, with  
 segment without teeth in usual  
 -dorsal corner; aedeagus widest  
 entrad to tip with about four  
 alf; aedeagal brace not visible;  
 caudal view; aedeagal brace not  
 wing to more or less avicephali-

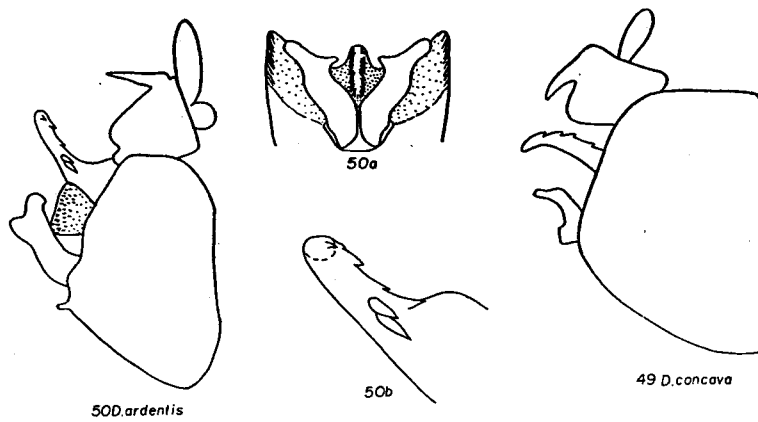
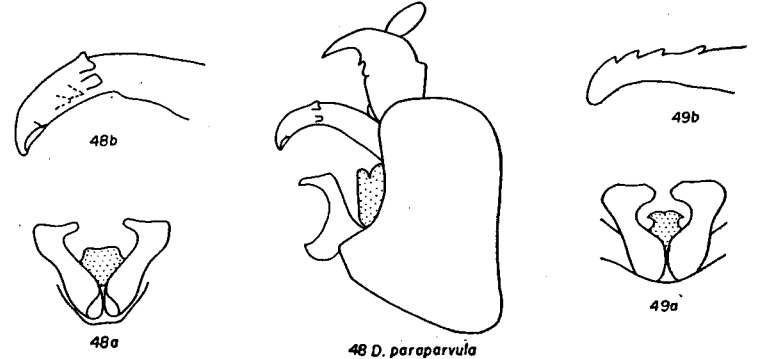
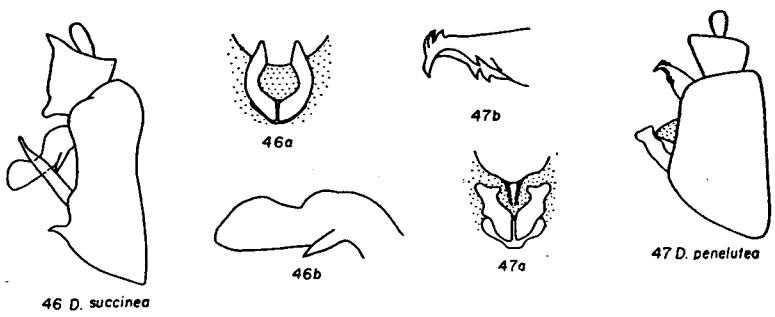
paratypes, Del Mar, Calif., July

ida n. sp.

1 D.) but male with black spot  
 tes with region between frontal  
 ; ♀ 2.3 mm.

twice as long as wide; front  
 idest near middle, very slightly  
 definitely tricarinate; crown as  
 genital capsule, apices rounded.  
 s of coxae, spots above them,  
 ae, spot on pronotum back of  
 ess dorsum of abdomen brown

: as long as wide; anal segment  
 esses, about as long as basal  
 to apex, curving ventrad on  
 near base and about six teeth  
 brace not visible; styles widest  
 view: aedeagal brace extended  
 t base, almost parallel-sided on



- Delphacodes sucinea Beamer.
- Delphacodes sucinea Beamer.
- Delphacodes sucinea Beamer.
- Delphacodes penelutea Beamer.
- Delphacodes penelutea Beamer.
- Delphacodes penelutea Beamer.
- Delphacodes paraparvula Beamer.
- Delphacodes paraparvula Beamer.
- Delphacodes paraparvula Beamer.
- Delphacodes paraparvula Beamer.
- Delphacodes concava Beamer.
- Delphacodes concava Beamer.
- Delphacodes concava Beamer.
- Delphacodes ardentis Beamer.
- Delphacodes ardentis Beamer.
- Delphacodes ardentis Beamer.

basal two-thirds, avicephaliform at apices, long, slender beak on inner margin.

Holotype ♂, allotype ♀, 1 ♂ and 1 ♀ paratype, Craig, Colo., August 3, 1947, R. H. Beamer.

Types in Snow Entomological Collections.

55. *Delphacodes alata* n. sp.

**Brachypterous form:**

Resembling *Delphacodes paraparvula* Beamer but aedeagus of male straight instead of curved ventrad. Length, ♂ 2 mm.; ♀ 2.5 mm.

**Structure:** First segment of antennae twice as long as wide; front about twice as long as wide, widest on apical third, narrowed toward each end, much more so toward base; crown one-third longer than wide, rounded at apex, carinae indistinct on anterior half; elytra about one-third longer than wide, apices narrowed and rounded, veins raised.

**Color:** General color stramineous; spot above hind coxae darker; only indications of other usual darker areas.

**Genitalia:** In lateral view: pygofer more or less rectangular, narrowed posteriorly; anal segment with two pairs of processes, the second very short; aedeagus long and straight, slightly tapered from base, a large, broad, flat process on left side of shaft near apex, another smaller serrated process on right side at tip; aedeagal brace small, more or less rectangular; styles pediform, heels large, tips bifid; in caudal view: aedeagal brace broad, slightly extended dorsad; styles enlarged at apices more or less avicephaliform.

Holotype ♂, allotype ♀, Big Pine Key, Fla., March 15, 1947, R. H. Beamer; paratypes: 2 ♂♂ and 1 ♀, Naples, Fla., March 16, 1947, R. H. Beamer; 1 ♂, Homestead, Fla., March 14, 1947, R. H. Beamer.

Types and paratypes in Snow Entomological Collections.

PLATE VIII

51. Lateral view of genital capsule of male of *Delphacodes plenatra* Beamer.  
 51a. Caudal view of styles and aedeagal brace of *Delphacodes plenatra* Beamer.  
 51b. Lateral view of aedeagus enlarged of *Delphacodes plenatra* Beamer.  
 C 52. Lateral view of genital capsule of male of *Delphacodes venusta* Beamer.  
 C 52a. Caudal view of styles and aedeagal brace of *Delphacodes venusta* Beamer.  
 C 52b. Lateral view of aedeagus enlarged of *Delphacodes venusta* Beamer.  
 C 52c. Ventral view of aedeagus enlarged of *Delphacodes venusta* Beamer.  
 53. Lateral view of genital capsule of male of *Delphacodes compta* Beamer.  
 53a. Caudal view of styles and aedeagal brace of *Delphacodes compta* Beamer.  
 53b. Lateral view of aedeagus enlarged of *Delphacodes compta* Beamer.  
 54. Lateral view of genital capsule of male of *Delphacodes munda* Beamer.  
 54a. Caudal view of styles and aedeagal brace of *Delphacodes munda* Beamer.  
 54b. Lateral view of aedeagus enlarged of *Delphacodes munda* Beamer.  
 55. Lateral view of genital capsule of male of *Delphacodes alata* Beamer.  
 55a. Caudal view of styles and aedeagal brace of *Delphacodes alata* Beamer.  
 55b. Lateral view of aedeagus enlarged of *Delphacodes alata* Beamer.



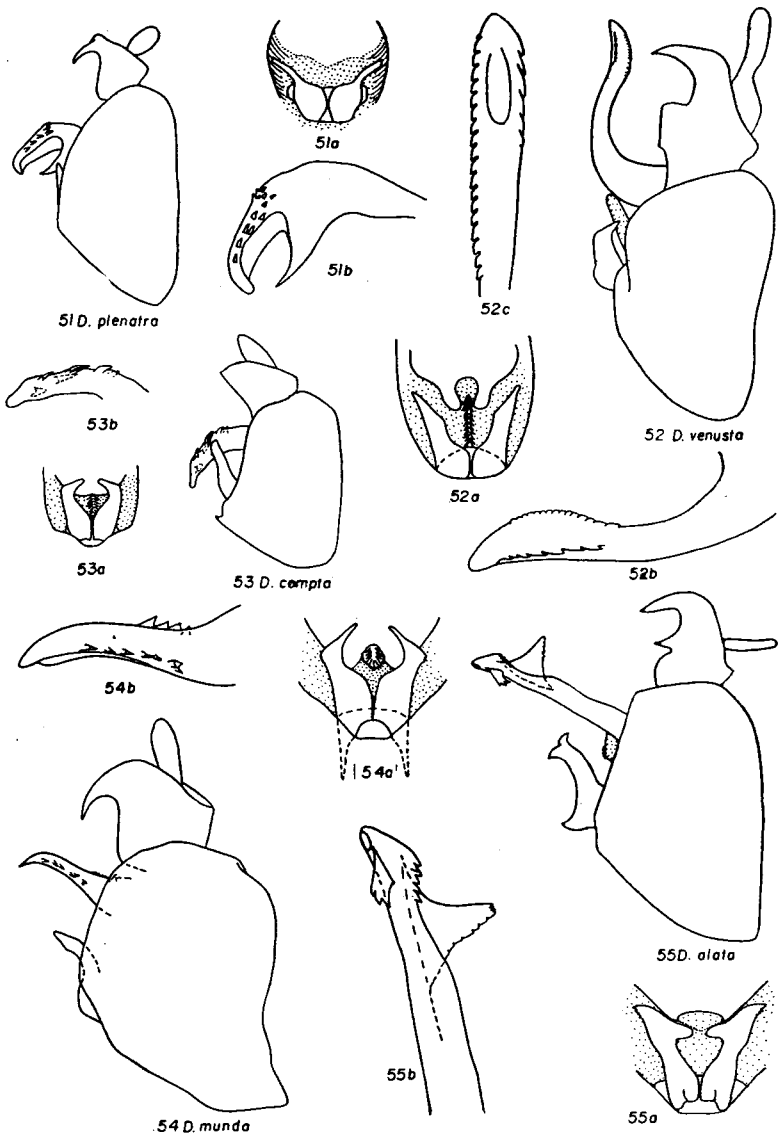
ZOOLOGICAL SOCIETY

long, slender beak on inner  
 paratype, Craig, Colo., August 3,

ta n. sp.  
 eamer but aedeagus of male  
 ♂ 2 mm.; ♀ 2.5 mm.  
 ce as long as wide; front about  
 rd, narrowed toward each end,  
 ird longer than wide, rounded  
 elytra about one-third longer  
 sins raised.  
 above hind coxae darker; only

or less rectangular, narrowed  
 rocesses, the second very short;  
 from base, a large, broad, flat  
 her smaller serrated process on  
 ore or less rectangular; styles  
 l view: aedeagal brace broad,  
 apices more or less avicephali-

., March 15, 1947, R. H. Beamer;  
 ch 16, 1947, R. H. Beamer; 1 ♂,  
 er.  
 iginal Collections.



- Delphacodes plenatra Beamer.
- Delphacodes plenatra Beamer.
- Delphacodes plenatra Beamer.
- Delphacodes venusta Beamer.
- Delphacodes venusta Beamer.
- Delphacodes venusta Beamer.
- Delphacodes venusta Beamer.
- Delphacodes compta Beamer.
- Delphacodes compta Beamer.
- Delphacodes compta Beamer.
- Delphacodes munda Beamer.
- Delphacodes munda Beamer.
- Delphacodes munda Beamer.
- Delphacodes munda Beamer.
- Delphacodes alata Beamer.
- Delphacodes alata Beamer.
- Delphacodes alata Beamer.